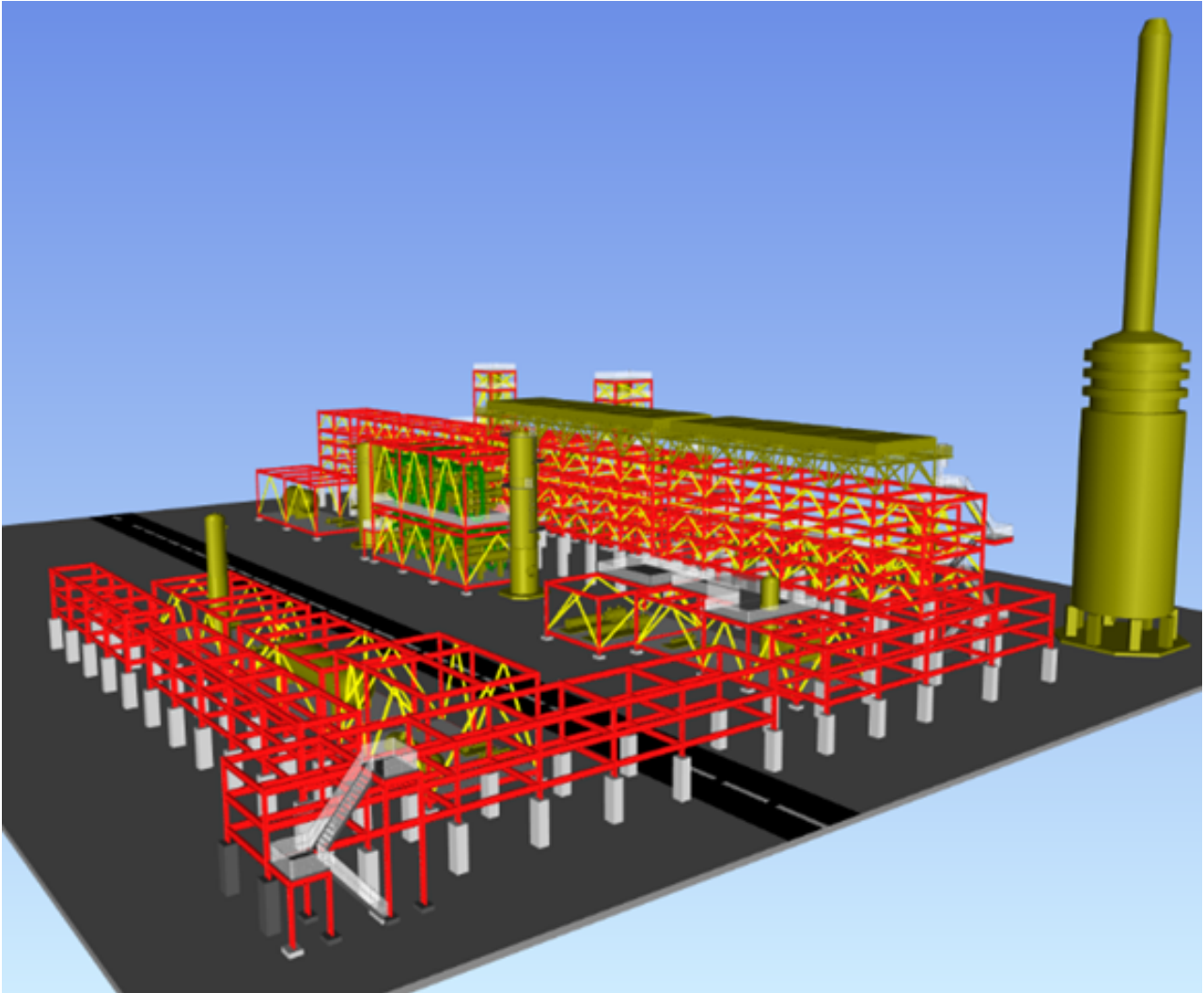


## Refinery Project (SDA Unit)



### About The Project

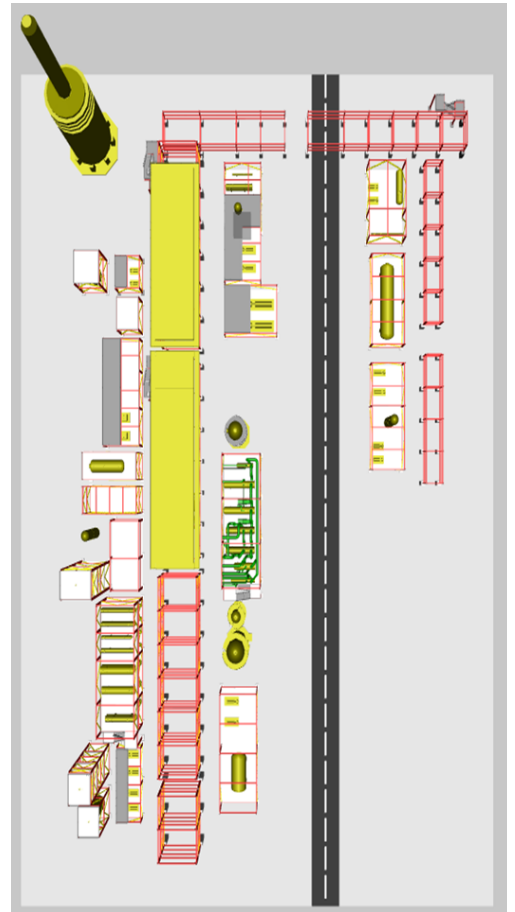
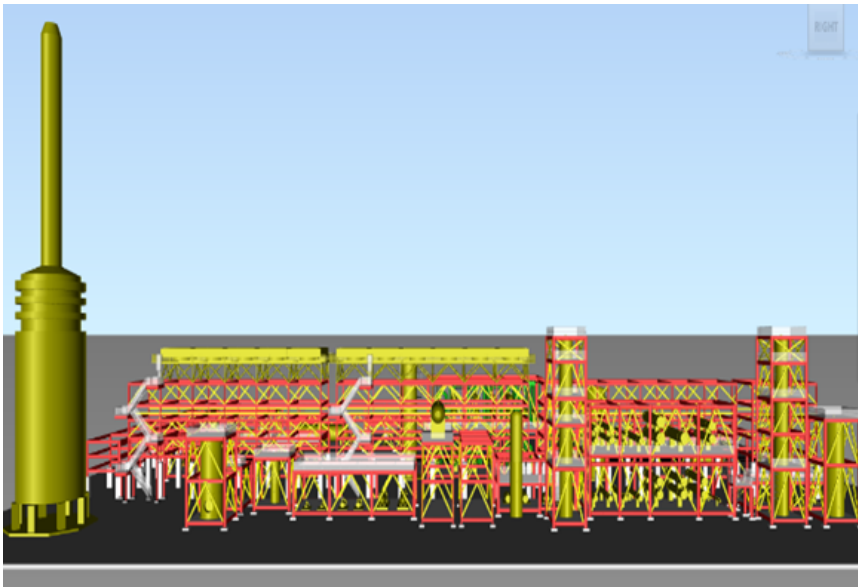
- Supercritical solvent Deasphalting (SDA) unit as part of a residue upgrading and clean fuels project at its refinery

### Project Scope

- Detailed Engineering Services

## Project Deliverables

- Equipment Layout
- Piping Layout
- Pipe Rack Design & Detailing
- Foundation Layouts
- Isometrics and Pipe Stress Analysis
- Cable Tray Layout, SLDs, Instrument Index
- 3D Model Review (30%, 60% & 90%)
- Bulk MTOs



## About Us



Founded in 1999. We are a multi-disciplinary engineering solutions company with offices in the USA & India. Delivering BIM, Rebar, Steel, Precast, Plant Engineering Services & Solutions for Commercial, Industrial, Infrastructure & Residential Projects. Get in touch with us to help you boost your profitability, project delivery schedules with quality, and efficient engineering solutions across all your projects.

### SECTORS

- Industrial
- Commercial
- Infrastructure
- Residential



BIM | Precast | Rebar | Steel | Plant Engineering

[www.pangulftech.com](http://www.pangulftech.com) [info@pangulftech.com](mailto:info@pangulftech.com)

### REGIONS

- USA
- Europe
- Australia
- Middle East
- Asia Pacific