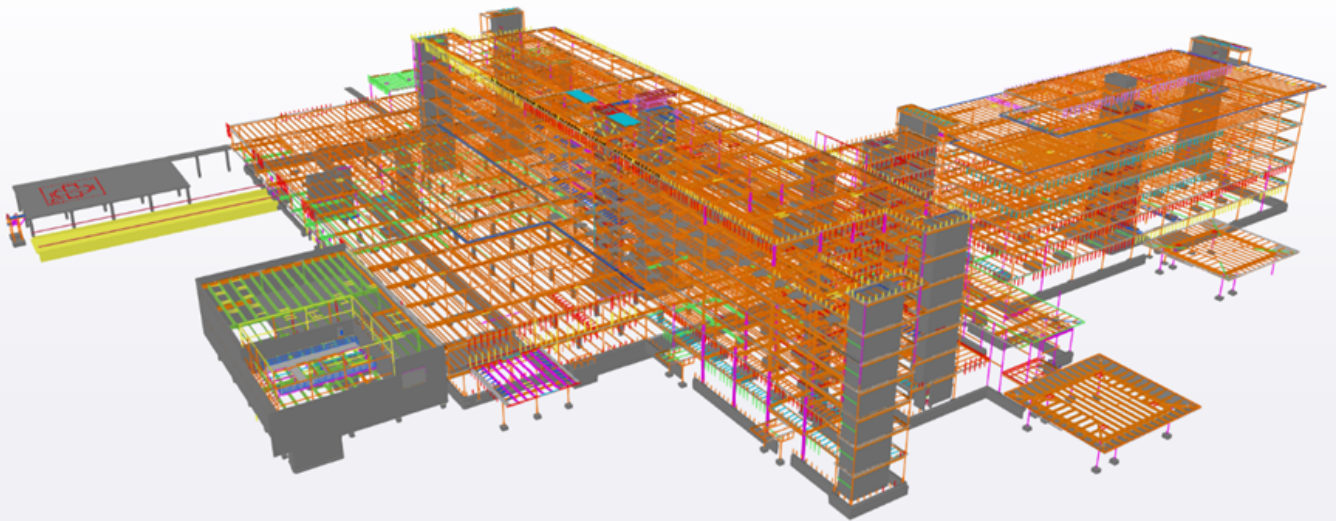


New Hospital Complex Project - North Dakota, USA

Structural Steel detailing for Main & Misc. Steel



About The Project

The project was for a new hospital complex based in Minot, North Dakota. A non-profit organization with more than 150 physicians and is the largest employer in Minot.

Project Deliverables

- 3D Model in Tekla
- Erection & Shop Drawings
- BOM
- KISS / NC Files
- Engineering Design and Calculations for Connections
- Design and Calculations for Stairs and Handrails

Tonnage

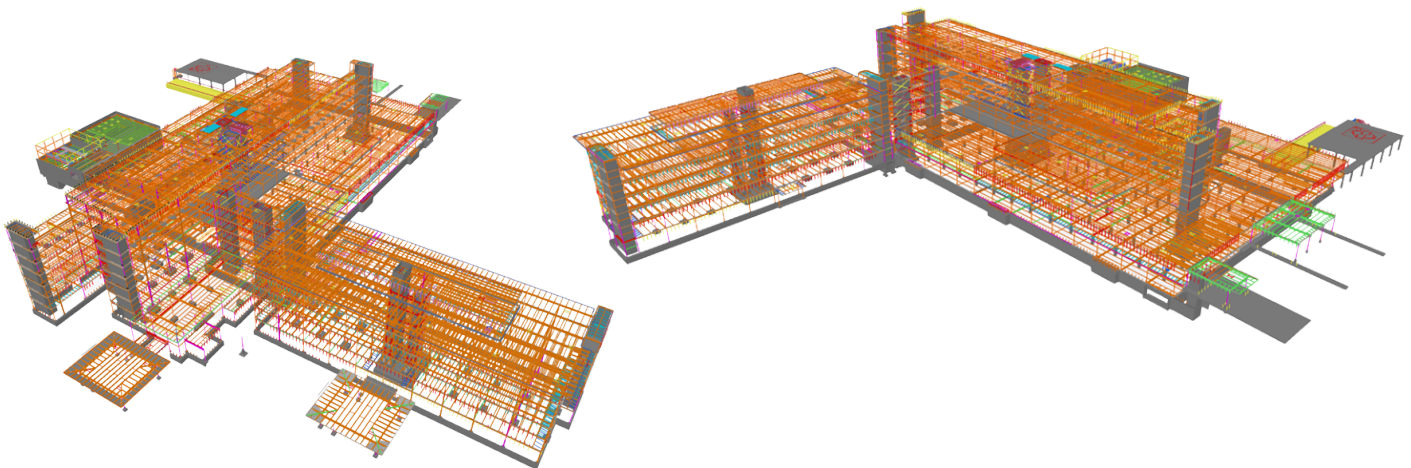
- Around 11,000 Tons

Software

- TEKLA

Our Challenges & Solutions

- Being a commercial healthcare facility, the need for coordination and communication was paramount for the successful execution of the project. PGT took the lead in handling communication with the fabricator and regularly updated our Client with detailed information through RFIs affecting
- PGT's eye for detail, thorough documentation, timely communication of critical areas where lack of information or conflicting information was noticed, PGT's active collaboration with our fabricator client to keep project on track and error free was a key contributor to the success of the project.
- PGT actively participated in General Contractor meetings with all trades and identified bottle necks due to conflicting information and pushed on critical RFIs. This helped in getting information communicated across multiple trade vendors and kept us on track with delivery schedule. Our QA and QC teams worked in conjunction to ensure error free delivery



About Us



Founded in 1999. We are a multi-disciplinary engineering solutions company with offices in the USA & India. Delivering BIM, Rebar, Steel, Precast, Plant Engineering Services & Solutions for Commercial, Industrial, Infrastructure & Residential Projects. Get in touch with us to help you boost your profitability, project delivery schedules with quality, and efficient engineering solutions across all your projects.

SECTORS

- Industrial
- Commercial
- Infrastructure
- Residential



BIM | Precast | Rebar | Steel | Plant Engineering



www.pangulftech.com



info@pangulftech.com

REGIONS

- USA
- Europe
- Australia
- Middle East
- Asia Pacific