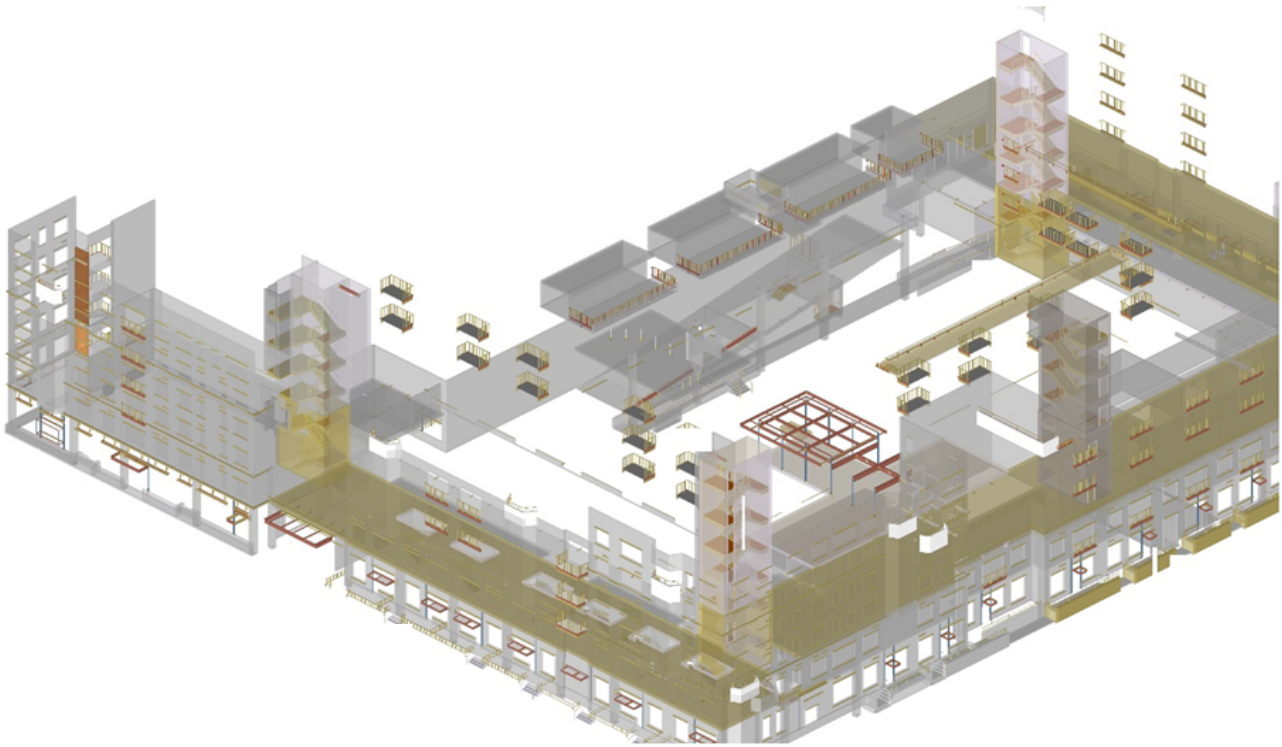


## Residential Apartment Project in Aurora, CO

Model Creation in SDS/2, Structural Steel detailing for Main & Misc. Steel



### About The Project

The project was a residential project. The project was expected to show many changes post-award and it was lacking in key dimensional information at the start of the project. PGT was up to the task of this challenge to drive the project by controlling delays and thereby minimizing delays from the lack of information and rapid design changes. Due to our robust internal documentation protocol and extensive logging of project data, we were able to arm our customers with important information needed to deliver steel without impacting detailing.

#### Project Deliverables

- 3D Model in SDS/2
- Erection & Shop Drawings
- BOM
- KISS / NC Files

#### Tonnage

- Around 150

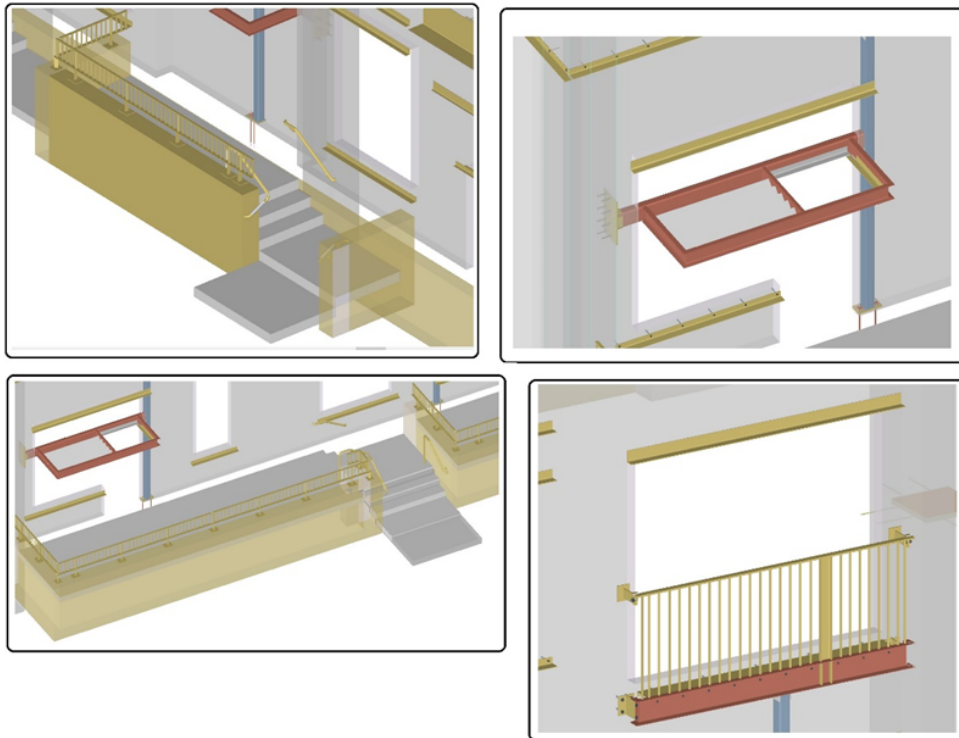
#### Software

- SDS/2



## Our Challenges & Solutions

- For a Steel fabricator, it is of utmost importance to keep the fabrication schedule unchanged as bottlenecking in fabrication could lead to huge cost escalations. Working in tandem with the fabricator to ensure that the project moved steel to the site on time, while also raising systematic and tracked RFIs meant we were able to ensure that the key information was pursued aggressively while at the same time, areas with available information were released for the shop. Regular Coordination with the fabricator to reduce delays and costs were the key benefits we were able to achieve for this project.



## About Us



Founded in 1999. We are a multi-disciplinary engineering solutions company with offices in the USA & India. Delivering BIM, Rebar, Steel, Precast, Plant Engineering Services & Solutions for Commercial, Industrial, Infrastructure & Residential Projects. Get in touch with us to help you boost your profitability, project delivery schedules with quality, and efficient engineering solutions across all your projects.

### SECTORS

- Industrial
- Commercial
- Infrastructure
- Residential



BIM | Precast | Rebar | Steel | Plant Engineering



[www.pangulftech.com](http://www.pangulftech.com)



[info@pangulftech.com](mailto:info@pangulftech.com)

### REGIONS

- USA
- Europe
- Australia
- Middle East
- Asia Pacific